



atom

A circular diagram with a thick black border. The outer ring contains several paper clips, with one clip at the top having a small upward-pointing arrow above it. The inner area of the circle is filled with a grid of small circles.

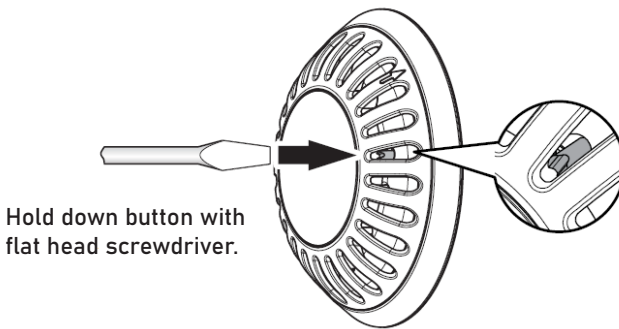
WINTERIZING PROCEDURE



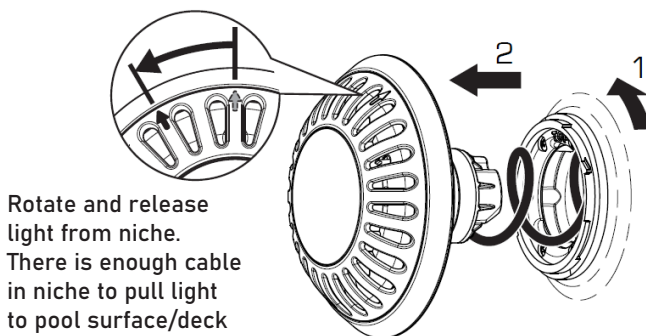
WINTERIZATION

- Lights must be removed from pool wall and cable disconnected via plug connection & stored in a safe place.
- Terminal Cover must be fitted to Plug Top prior to reinstalling into niche for winter.
- Unless niche/conduit connection is adequately sealed (i.e. via included cable gland components), pool water level must be drained down 12" below the lowest light(s) position in pool wall.
- All conduits should be checked for accumulated water and drained if required.
- Consult your local pool professional for complete pool winterization process.

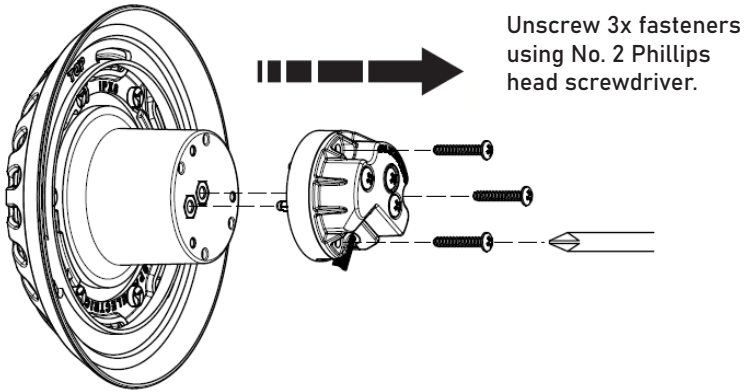
1. Push and hold red button with flat head screwdriver.



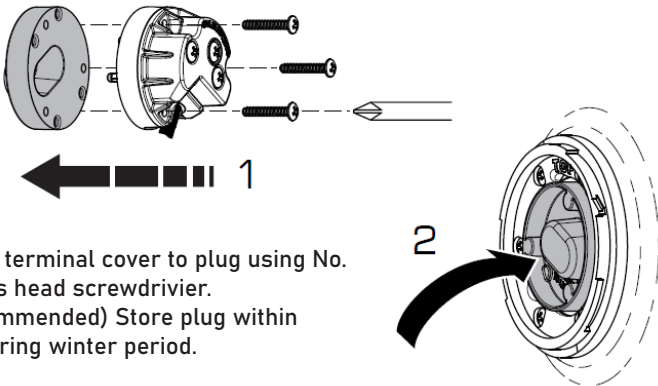
2. While continuing to hold button, rotate counter-clockwise & remove bulb from locking ring.



3. Remove plug from light.



4. Install supplied red winterizing cap in place of bulb. Store bulb indoors to optimize product longevity.



1. Attach terminal cover to plug using No. 2 Phillips head screwdriver.
2. (Recommended) Store plug within niche during winter period.



Proudly manufactured by

Spa Electrics



www.spaelectrics.ca